

## In This Issue:

- Holiday Hours
- Calendars
- Long Term Med Use Pt. 2
- Donations
- Staff Updates

## Holiday Hours & Calendars



It's almost the holiday season! With the holidays just around the corner, we will have modified office hours. Please make sure all prescriptions are called in & picked up within our modified schedule.

**Dec 20th - 22nd 2021: 8:30am - 5pm**

**December 23rd 2021: 8:30am - 2:30pm**

**December 24th 2021: 8:30am - 12:30pm**

**December 25th & 26th 2021:**

**CLOSED EXCEPT FOR EMERGENCIES**

**December 27th - 30th 2021: 8:30am - 5pm**

**December 31st 2021: 8:30am - 12:30pm**

**January 1st - 2nd 2022:**

**CLOSED EXCEPT FOR EMERGENCIES**

**January 3rd 2022: 8:30am - 5pm**

Calendars may be a little late, but they are on their way! Please make sure your mailing address is up-to-date in our system in order to secure another lovely 2022 calendar this year.

## Townsend Equine Health Research Fund

Throughout the year, when our beloved equine patients pass away, Swiftsure Equine donates to an equine charity dedicated to influencing the quality of horse health care in Western Canada. The Townsend Equine Health Research Fund plays a major role in making the Western College of Veterinary Medicine a national centre for horse health research and specialized training. The Fund annually invests more than \$100,000 in equine health research projects, a research fellowship program for graduate students and a summer research program for undergraduate veterinary students. The Townsend Equine Health Research Fund aims to bring better health to horses, and Swiftsure Equine is proud to provide memorial donations to assist their efforts. In 2021, we have donated over \$4,000 to the Fund.

## BC Flooding

Thousands of animals and livestock have been significantly impacted by the devastating flooding this past week across BC. Swiftsure Equine has donated \$2000 to the BC SPCA to assist displaced animals and owners with food and shelter. We have also donated \$3000 to the HCBC Disaster Relief Fund which assists displaced horses and livestock during disasters. Lastly, our veterinarians have added their names to the growing list of veterinarians offering their services to help support flood response through our Provincial Association.

# Long Term Medication Use Pt. 2: PSGAGs & HAs

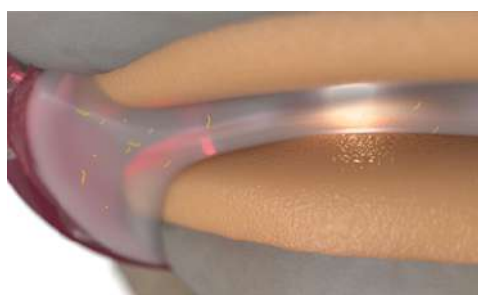
Degenerative Joint Disease (DJD), commonly termed Osteoarthritis (OA) is commonly seen in our aging horses and is reported to be responsible for 60% of all lamenesses. As a result, veterinary medicine has evolved multiple modalities to help support and treat DJD in our riding horses. In Part 1 of the series, we discussed NSAIDs. In this newsletter we will be discussing Polysulphated Glycosaminoglycan (PSGAG) and Hyaluronic Acid (HA), their functions, and how they differ.

As opposed to NSAIDs, long term use of PSGAGs and HAs are generally very well tolerated in our horses, in all of their life stages, and with other concurrent conditions. They can be used not only as a treatment for DJD, but also used as a tool to help mediate the development of DJD precursors. As a result, we often see younger horses starting on some of these products before they develop lameness or signs of DJD.

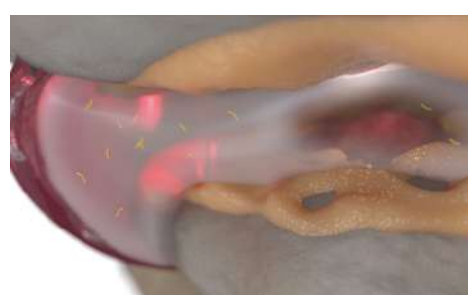
Many of our clients with aging horses are now familiar with HA products such as Legend or Hy-50. Hyaluronic acid is a lubricating molecule found normally in healthy joints. It mitigates the inflammatory mediators within the joint and protects the cartilage from degeneration which occurs from repeated stress and microtraumas from workload, following injury, or developmental or conformational flaws. As horses age and DJD progresses, Legend and Hy-50 help replace the declining naturally-produced HA, reducing joint friction, preventing cartilage degeneration, and in particular treating joint synovitis, and inflammation in the joint. HA is administered intravenously (IV) or intra-articularly (IA - into the joint) and has minimal adverse effects.

Another product just returning to the Canadian market after a decade hiatus is Adequan, a PSGAG. PSGAGs are incorporated into healthy and diseased joints, and although the exact mechanism is unknown, they are believed to increase the joint matrix of proteoglycans, HA and collagen, as well as reduce inflammatory mediators and degenerative enzymes in the diseased joint. PSGAG is administered intramuscularly or IA. As it has chemical properties similar to heparin, overdose can inhibit coagulation.

Adequan, Legend or Hy-50 can be used to help address all stages of DJD in your performance horse. Consultation with a veterinarian will help determine which product, or both, would be best suited for your horse given their current joint health, and future expectations.



Healthy joint cartilage and synovial fluid



Diseased cartilage and inflamed synovial fluid

Image credit: [www.adequan.com](http://www.adequan.com)

## New Veterinary Assistant!

Sara has lived on Vancouver Island most of her life and fell in love with horses at an early age. She started riding at age 5 and has been hooked ever since. Sara has many years experience in office administration, customer service and horse care. When not working, Sara can be found riding her horse Cargo, exploring the island, spending time with her dog and two cats, reading or spending time with friends and family.

**Please help us welcome Sara to the SEVS team!**

